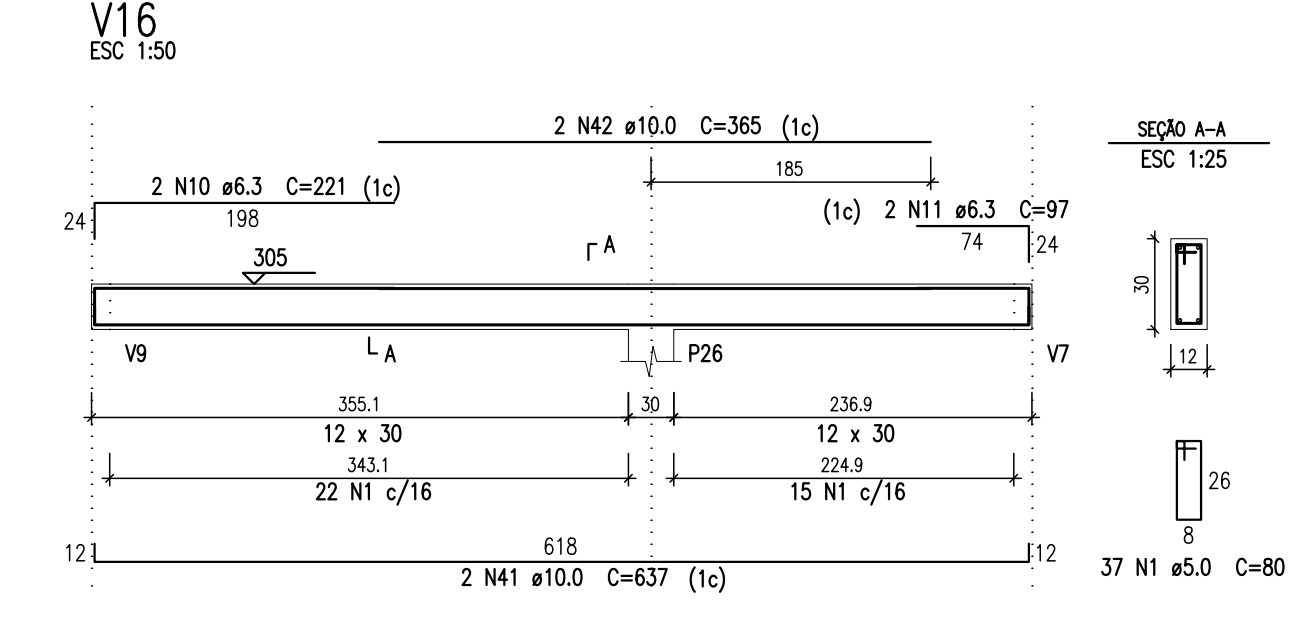
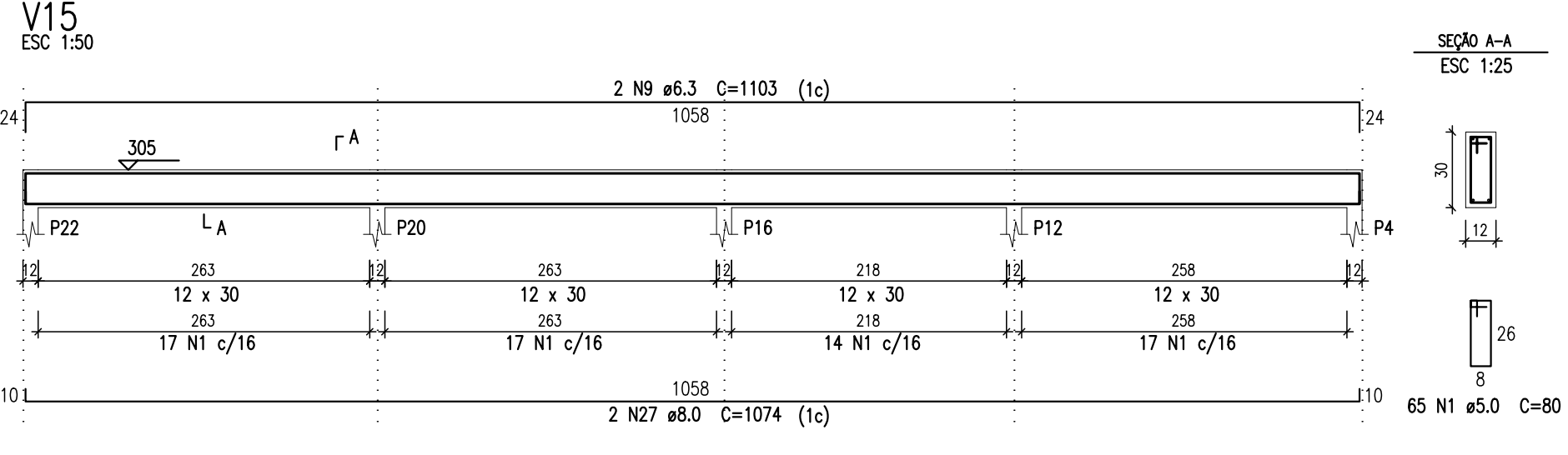
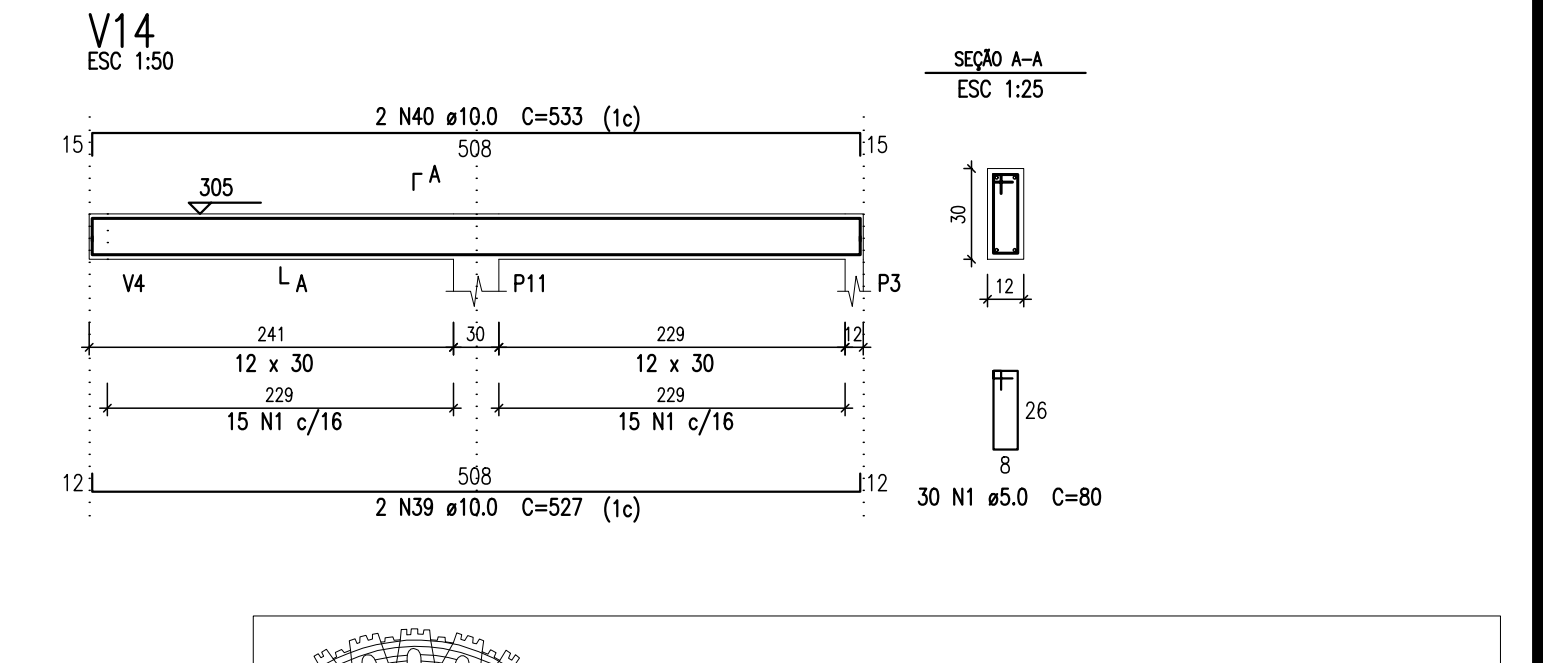
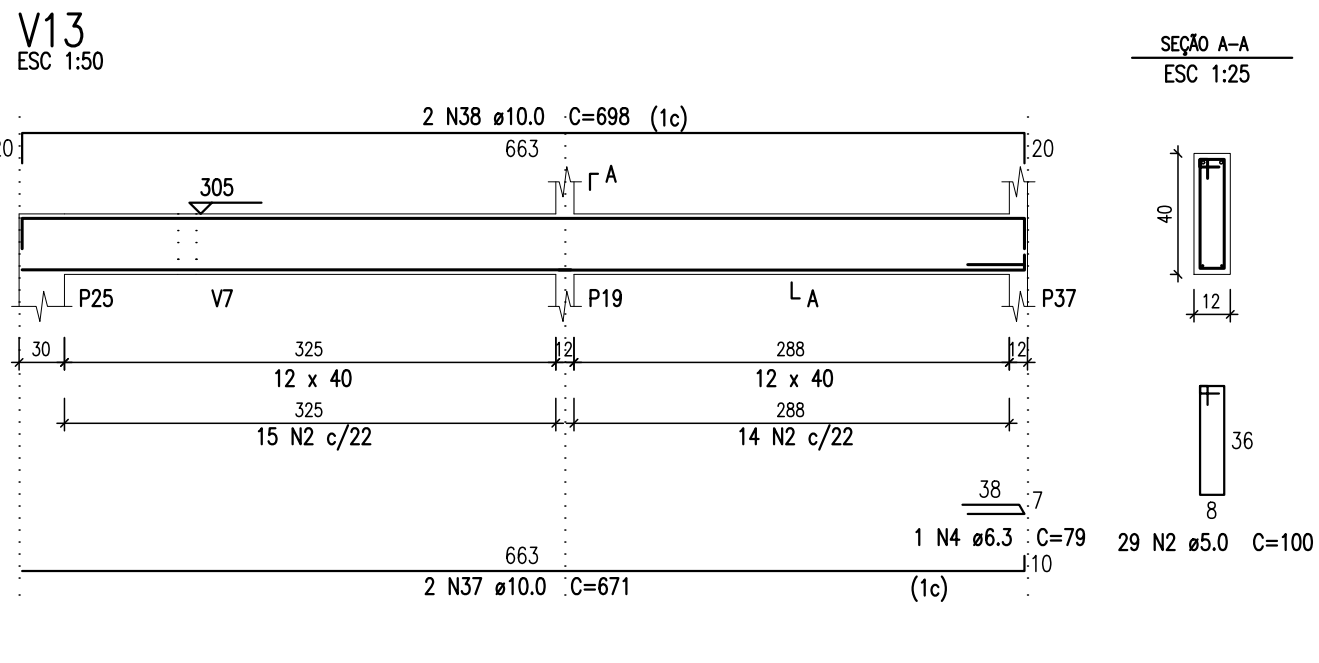
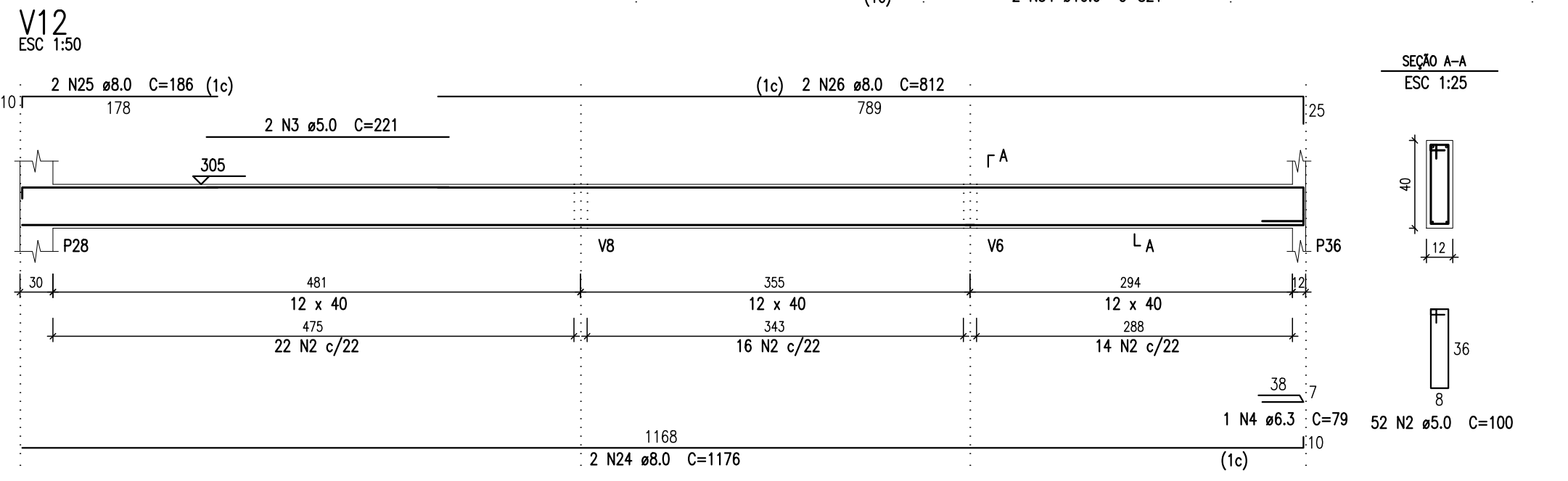
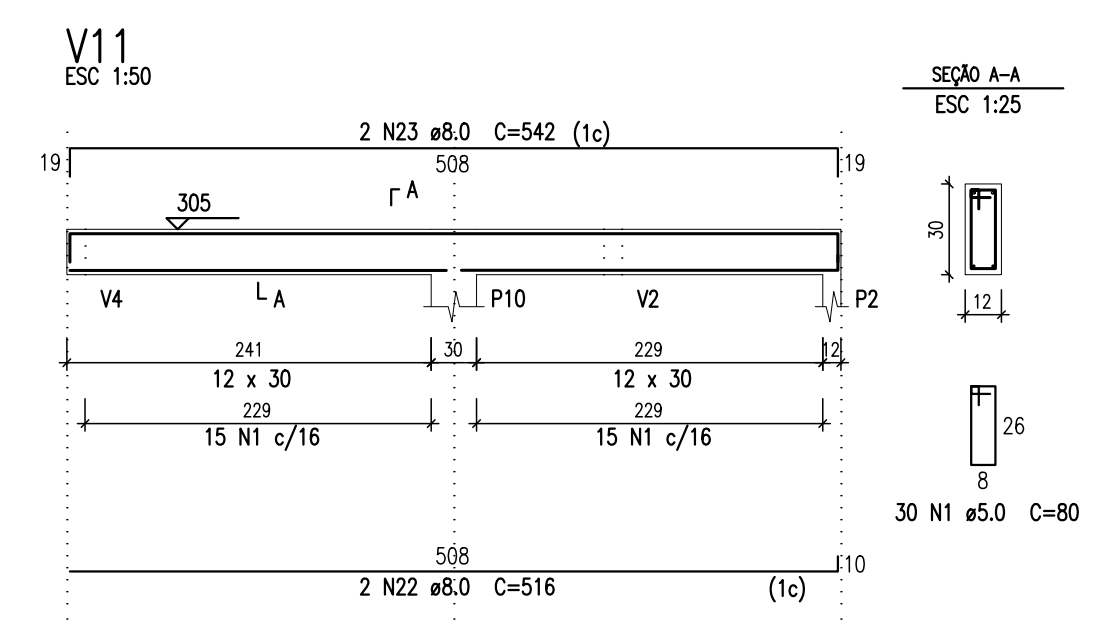
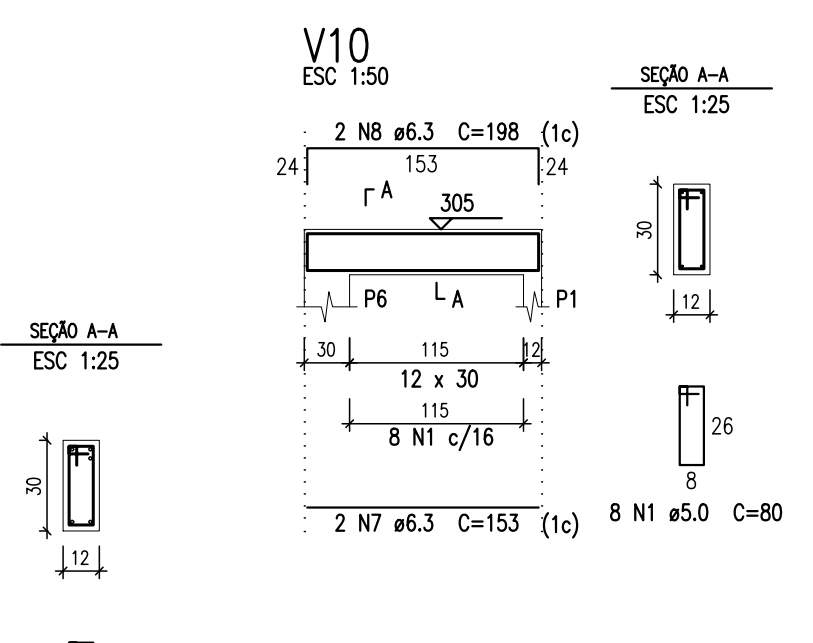
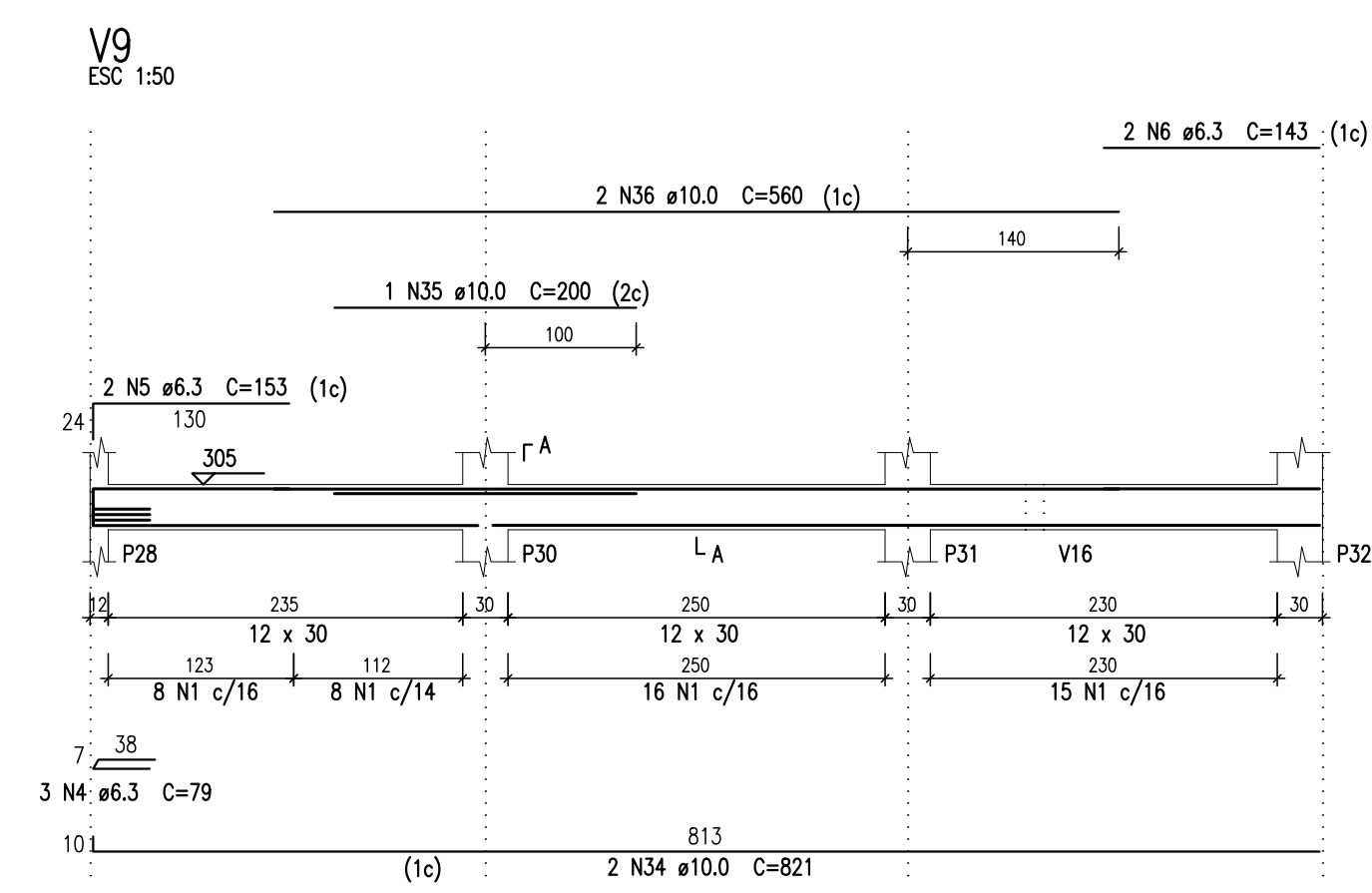
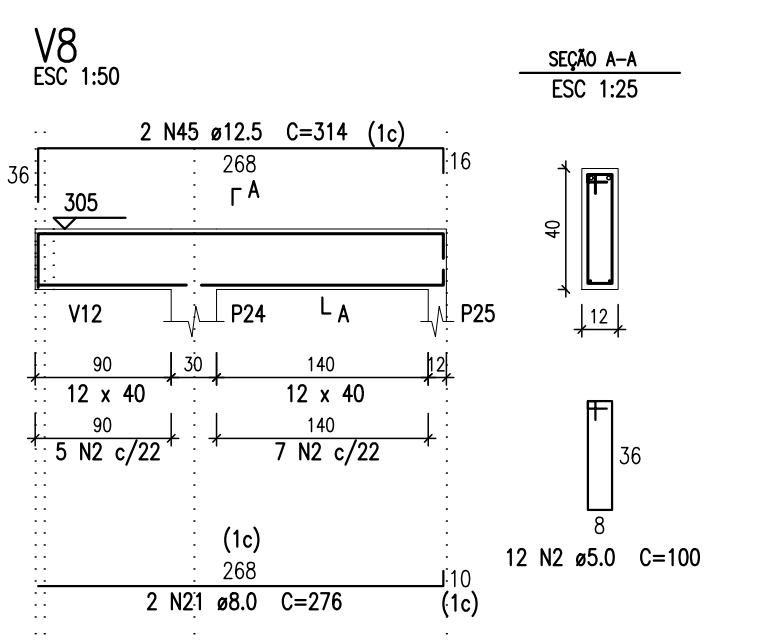
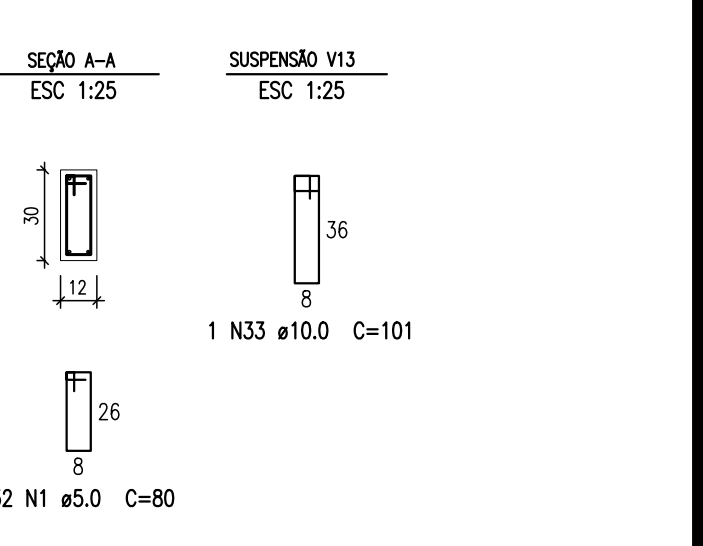
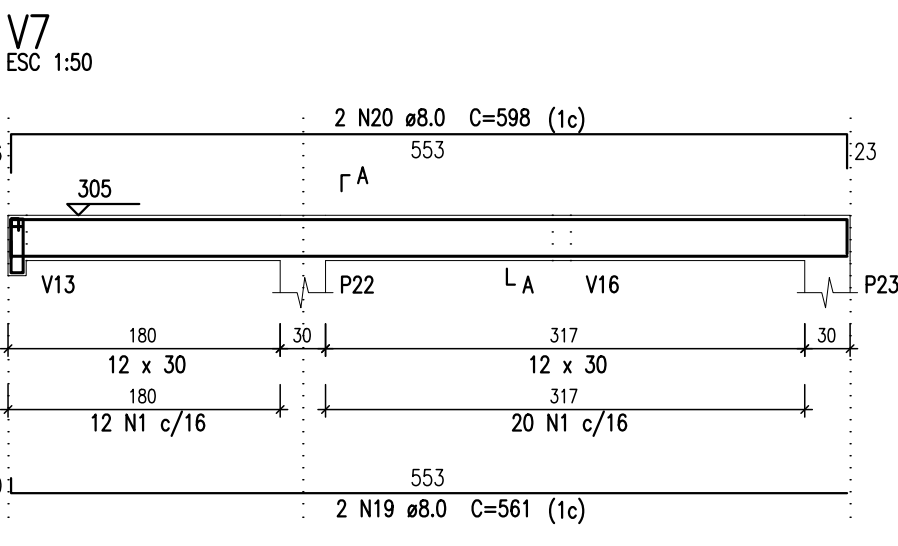
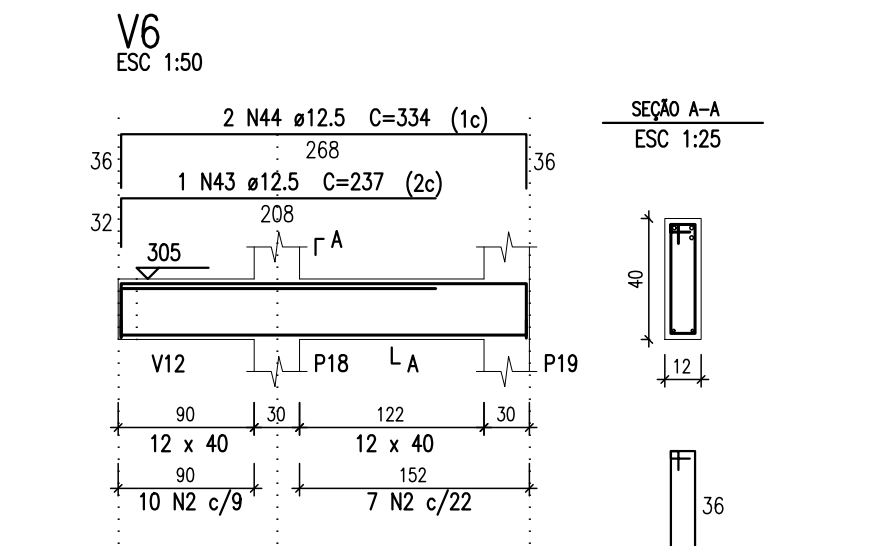
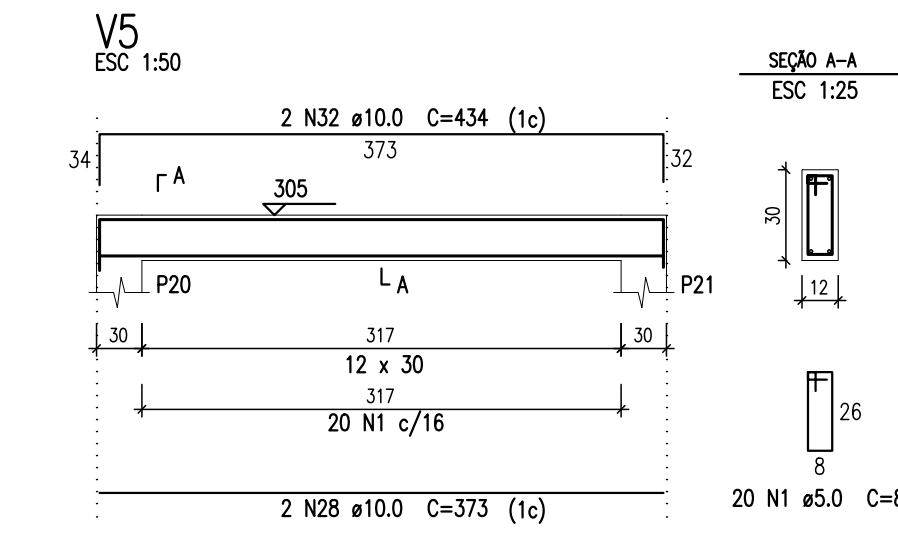
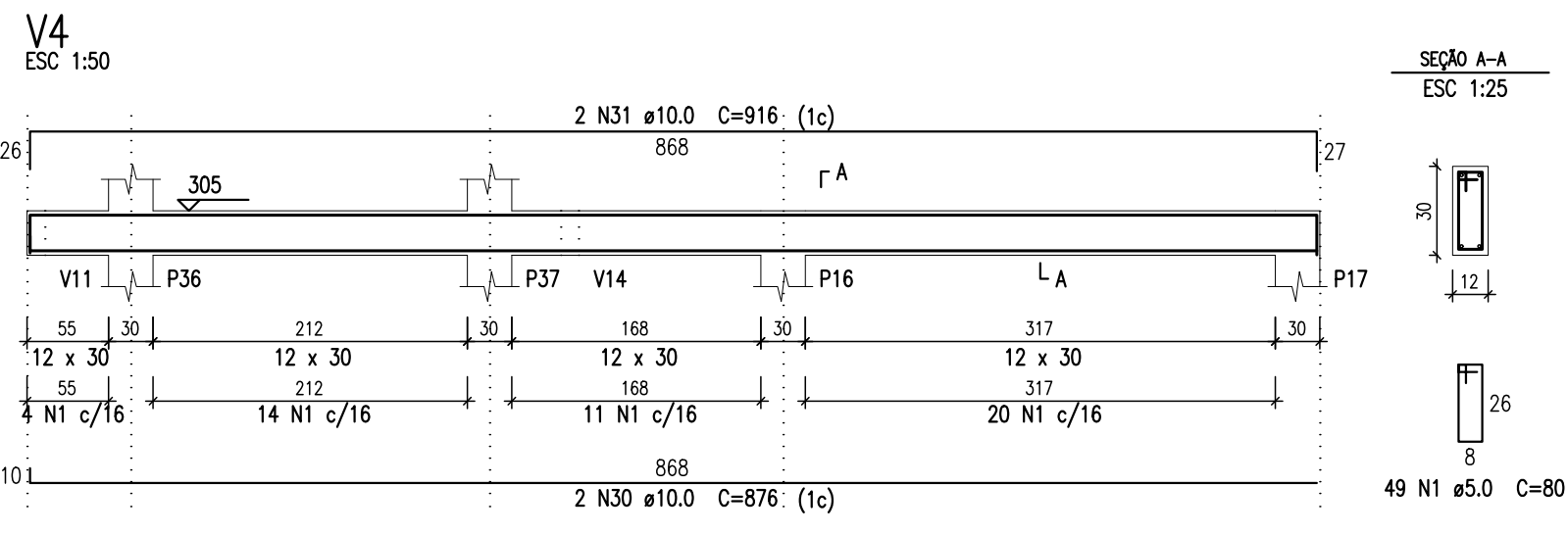


Resumo do aço

AÇO	DIAM (mm)	C.TOTAL (m)	QUANT + 10 % (Barras)	UNIT	PESO + 10 % (kg)
CA50	6.3	45.4	5	12 m	12.2
	8.0	189.2	18	12 m	82.1
	10.0	167.3	16	12 m	113.4
	12.5	15.4	2	12 m	16.2
CA60	5.0	461.7	-	rolo (170 kg)	78.3
PESO TOTAL (kg)					
CA50	224				
CA60	78.3				

Volume de concreto (C=20) = 3.85 m³
Área de forma = 76.13 m²



Prefeitura Municipal de Tubarão
Secretaria de Urbanismo

Projeto Estrutural

OBJETO: AMPLIAÇÃO UBS CLÍNICA DO BECK		ENDEREÇO: Rua Antônio Borges Bairro Oficinas - Tubarão/SC
ASSUNTO: DETALHAMENTO DAS VIGAS DA COBERTURA		RESP. TÉCNICO: RICHARD RODRIGUES ALEXANDRE Engenheiro Civil - CREA/SC nº 044.062-2
ESCALA: Indicada	DATA: Jun/2015	ARQUIVO: est_Franclino Mendes.dwg

06
08