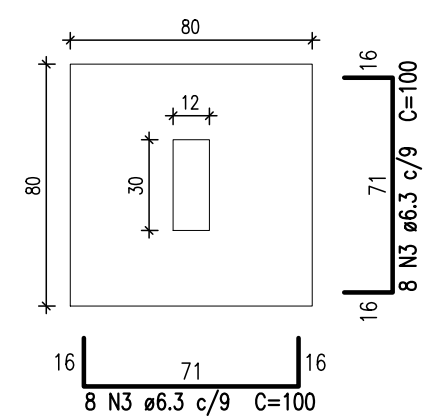
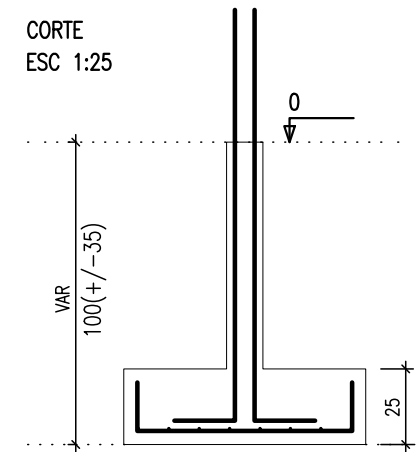


S1
PLANTA
ESC 1:25



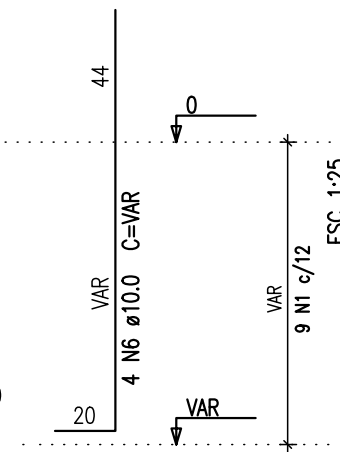
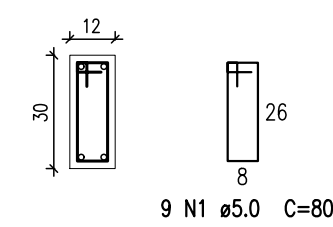
Solo com capacidade de suporte > 1.20 kgf/cm²

CORTE
ESC 1:25



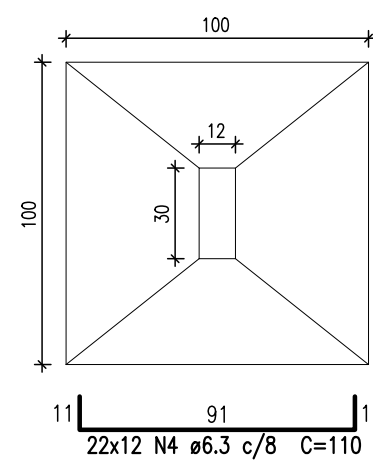
P1

BALDRAME - L1
ESC 1:20



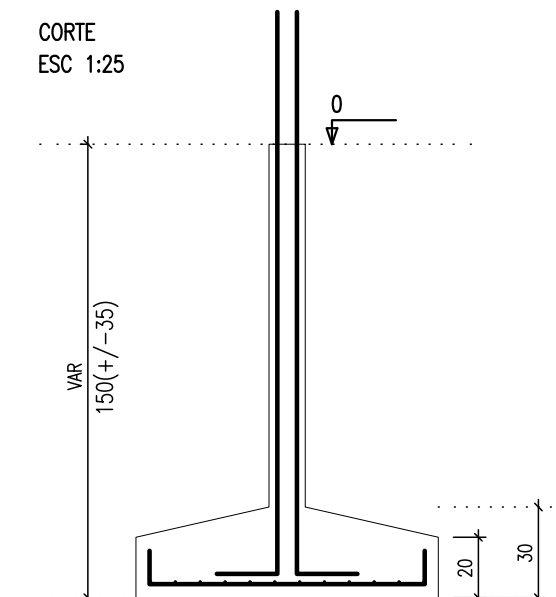
S2=S4=S5=S8=S10=S11=S12=S13=S16=S17=S19
=S20=S21=S22=S23=S25=S26=S27=S32=S34
=S36=S37

PLANTA
ESC 1:25



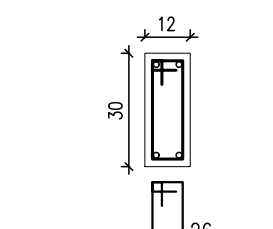
Solo com capacidade de suporte > 1.20 kgf/cm²

CORTE
ESC 1:25

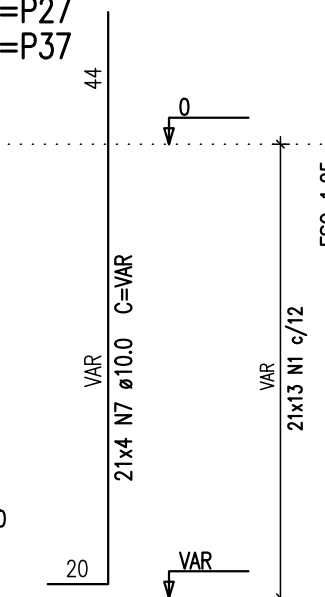


P2=P4=P5=P10=P11=P12=P13
=P16=P17=P19=P20=P21=P22
=P23=P25=P26=P27
=P32=P34=P36=P37

BALDRAME - L1
ESC 1:20

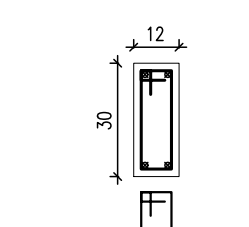


21x13 N1 ø5.0 C=80

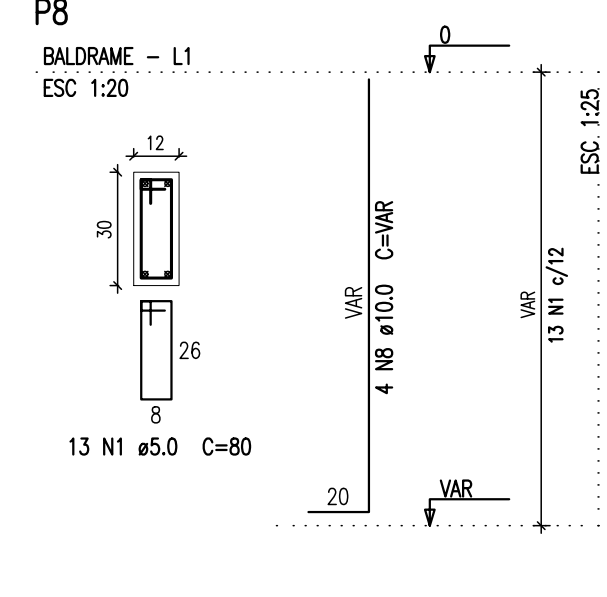


P8

BALDRAME - L1
ESC 1:20

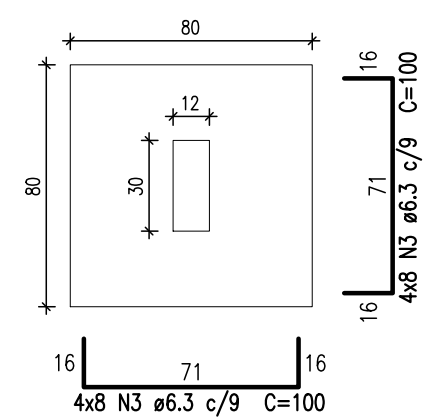


13 N1 ø5.0 C=80



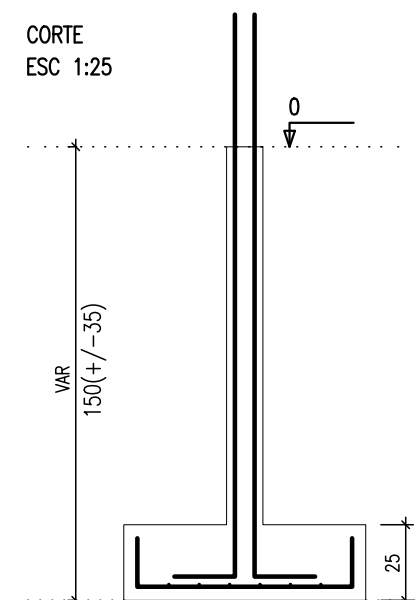
S3=S7=S33=S35

PLANTA
ESC 1:25



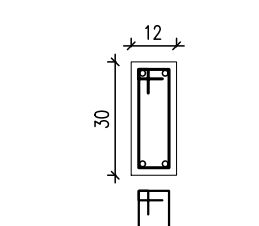
Solo com capacidade de suporte > 1.20 kgf/cm²

CORTE
ESC 1:25

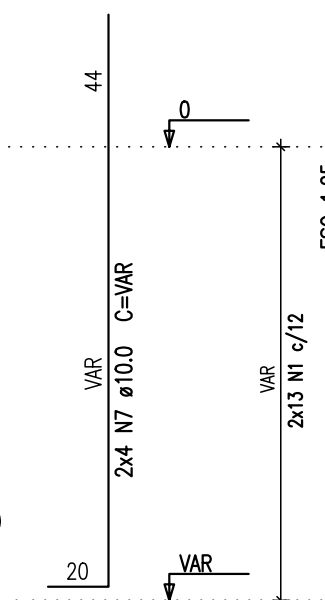


P3=P33

BALDRAME - L1
ESC 1:20

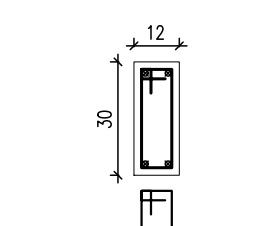


2x13 N1 ø5.0 C=80

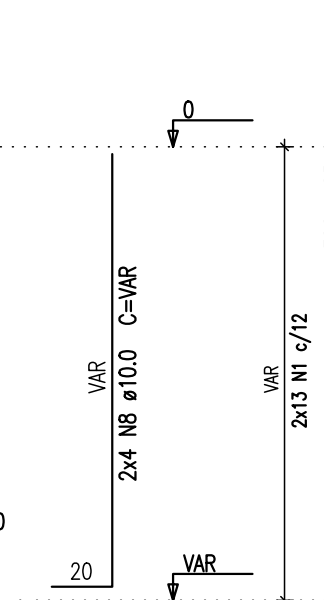


P7=P35

BALDRAME - L1
ESC 1:20

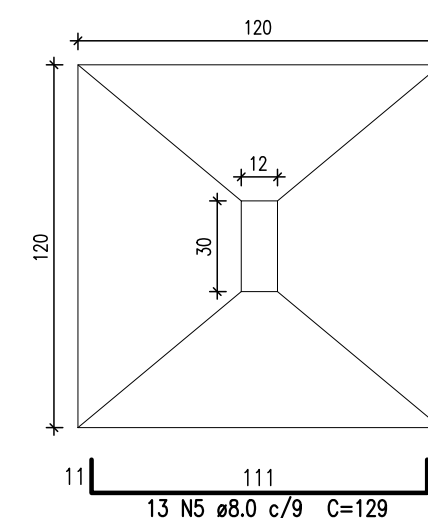


2x13 N1 ø5.0 C=80



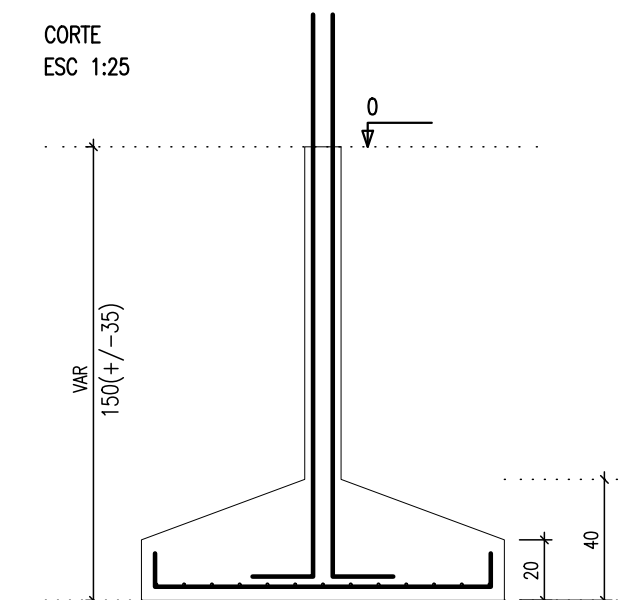
S18=S24=S30=S31

PLANTA
ESC 1:25



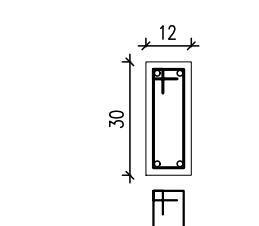
Solo com capacidade de suporte > 1.20 kgf/cm²

CORTE
ESC 1:25

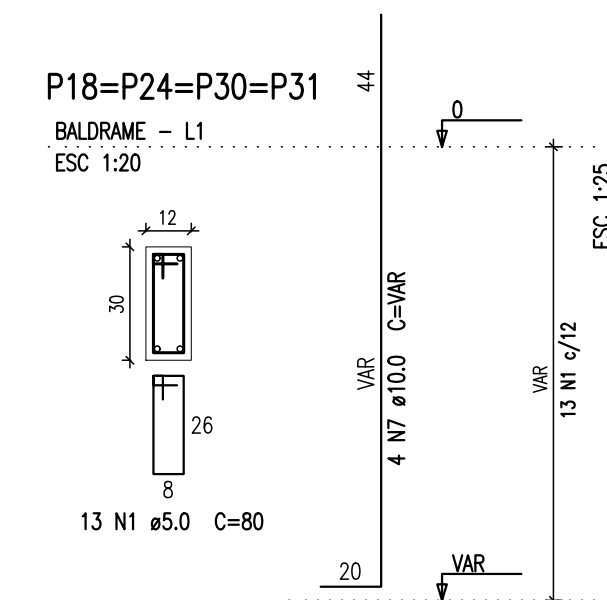


P18=P24=P30=P31

BALDRAME - L1
ESC 1:20

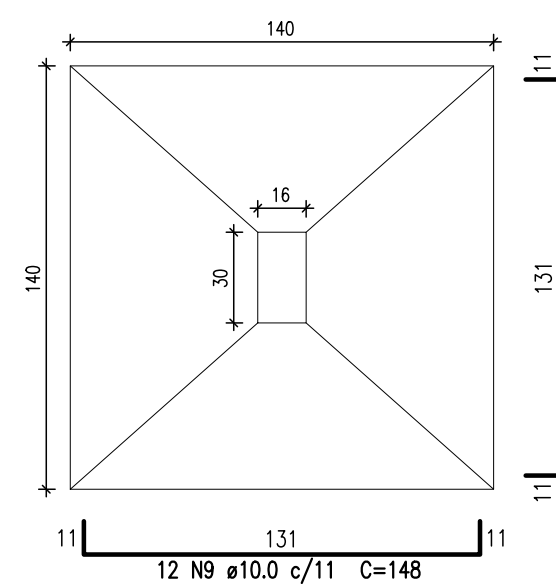


13 N1 ø5.0 C=80



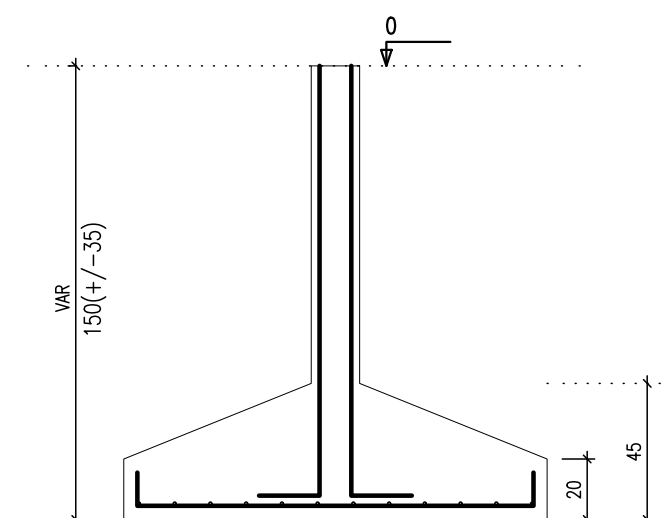
S29

PLANTA
ESC 1:25



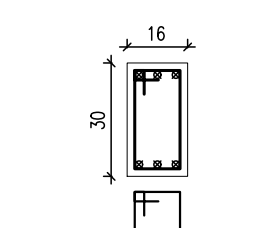
Solo com capacidade de suporte > 1.20 kgf/cm²

CORTE
ESC 1:25

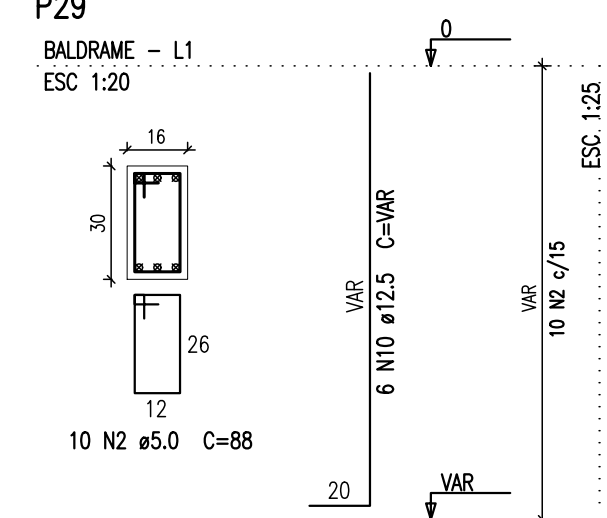


P29

BALDRAME - L1
ESC 1:20



10 N2 ø5.0 C=88



Resumo do aço

AÇO	DIAM (mm)	C.TOTAL (m)	QUANT + 10 % (Barras)	UNIT	PESO + 10 % (kg)
CA50	6.3	660.8	61	12 m	177.9
	8.0	134.2	13	12 m	58.2
	10.0	285.8	27	12 m	193.8
	12.5	9.6	1	12 m	10.2
CA60	5.0	328	-	rolo (170 kg)	55.6
PESO TOTAL (kg)					
CA50					440.1
CABO					55.6

Volume de concreto (C=20) = 10.02 m³
Área de forma = 66.58 m²



Prefeitura Municipal de Tubarão
Secretaria de Urbanismo

Projeto Estrutural

OBJETO: AMPLIAÇÃO UBS CLÍNICA DO BECK		ENDEREÇO: Rua Antônio Borges Bairro Oficinas - Tubarão/SC	
ASSUNTO: DETALHAMENTO DAS FUNDAÇÕES		RESP. TÉCNICO: RICHARD RODRIGUES ALEXANDRE Engenheiro Civil - CREA/SC nº 044.062-2	
ESCALA: Indicada	DATA: Jun/2015	ARQUIVO: est_Francelino Mendes.dwg	02 08