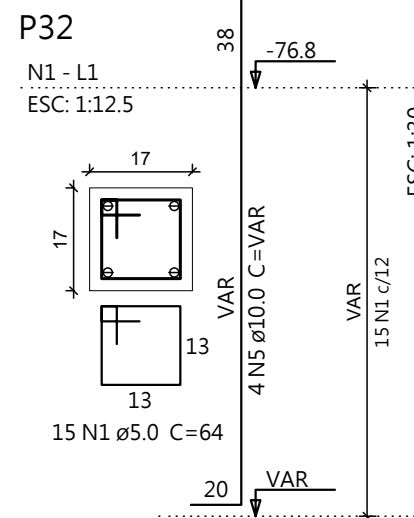
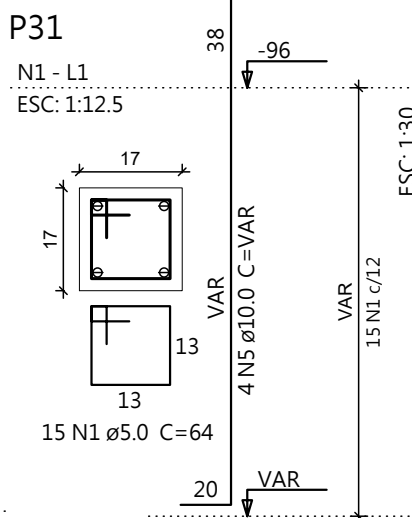
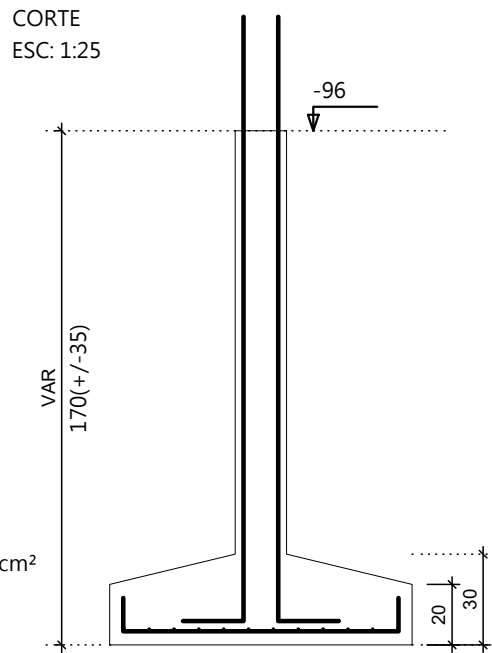
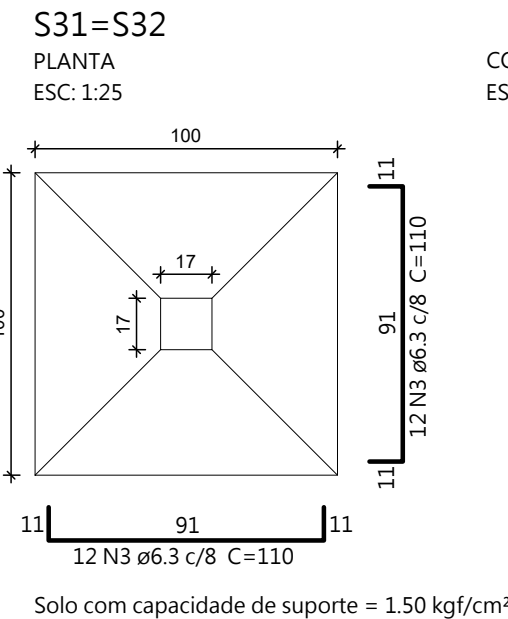
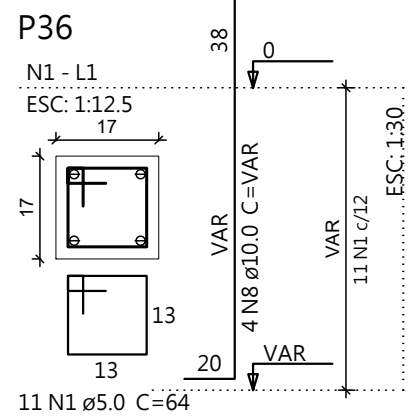
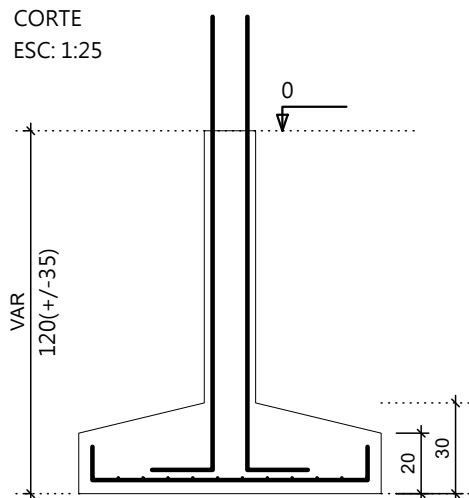
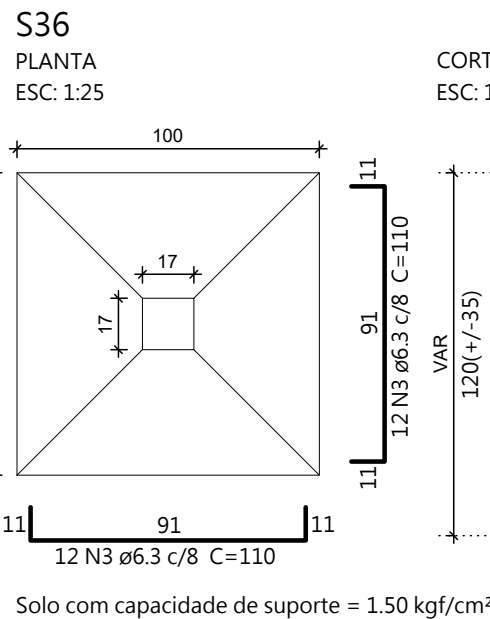
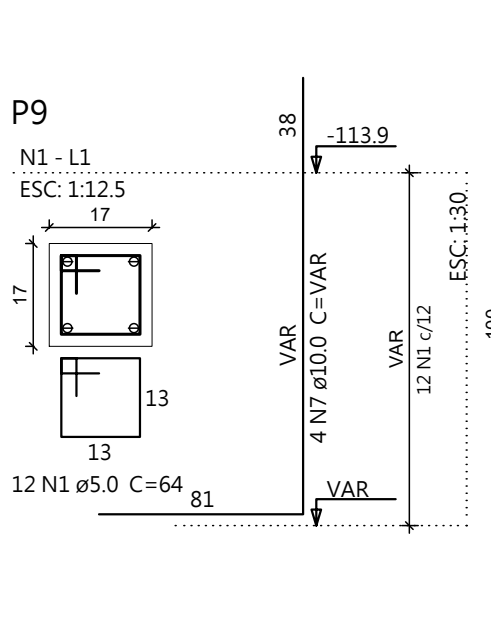



Resumo do aço

AÇO	DIAM (mm)	C.TOTAL (m)	PESO + 5 % (kg)
CA50	6.3	115.2	29.6
	8.0	209.5	86.8
	10.0	116.9	75.7
CA60	5.0	101.2	16.4
PESO TOTAL (kg)			
CA50		192	
CA60		16.4	

Volume de concreto (C-20) = 3.58 m³
Volume de concreto (C-25) = 0.52 m³
Área de forma = 26.23 m²





Prefeitura Municipal de Tubarão

Secretaria de Urbanismo, Mobilidade e Planejamento

Projeto Estrutural

OBJETO: Muro C. E. I. Walt Disney

ASSUNTO: DETALHAMENTO DAS SAPATAS - 02/02

ESCALA: Indicada

DATA: Jun/2017

ARQUIVO: est_Muro Walt Disney.dwg

ENDERECO: Rua Pedro Gomes de Carvalho
Bairro Oficinas - Tubarão/SC

RESP. TÉCNICO: RICHARD RODRIGUES ALEXANDRE
Engenheiro Civil - CREA/SC nº 044.062-2

03
08